

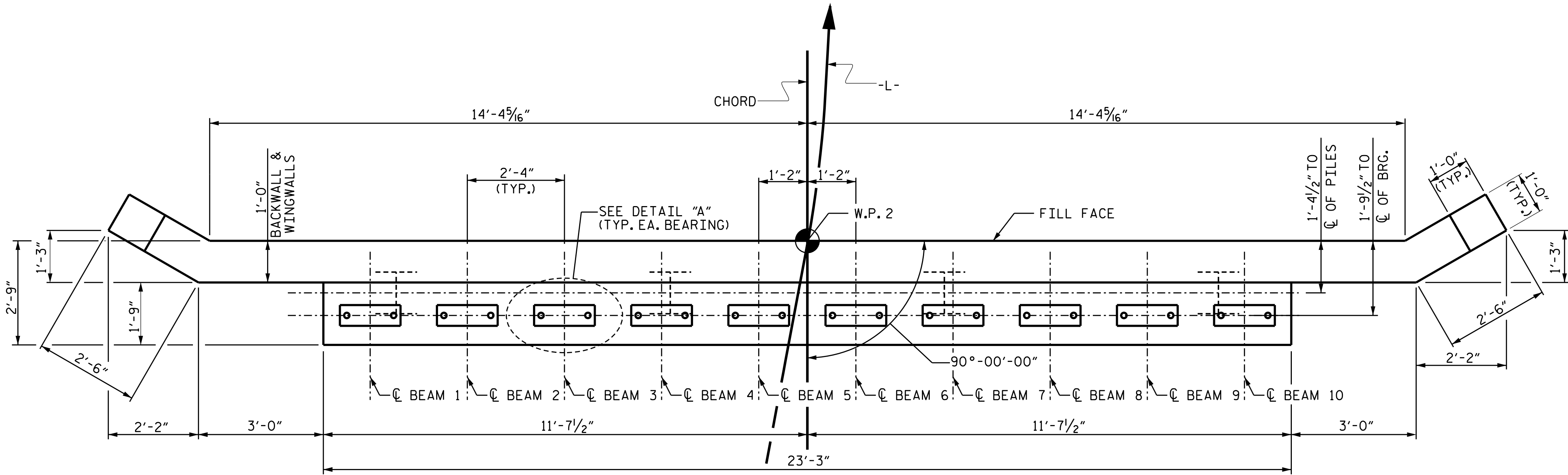
NOTES

STIRRUPS IN CAP MAY BE SHIFTED AS NECESSARY TO CLEAR ANCHOR BOLTS.

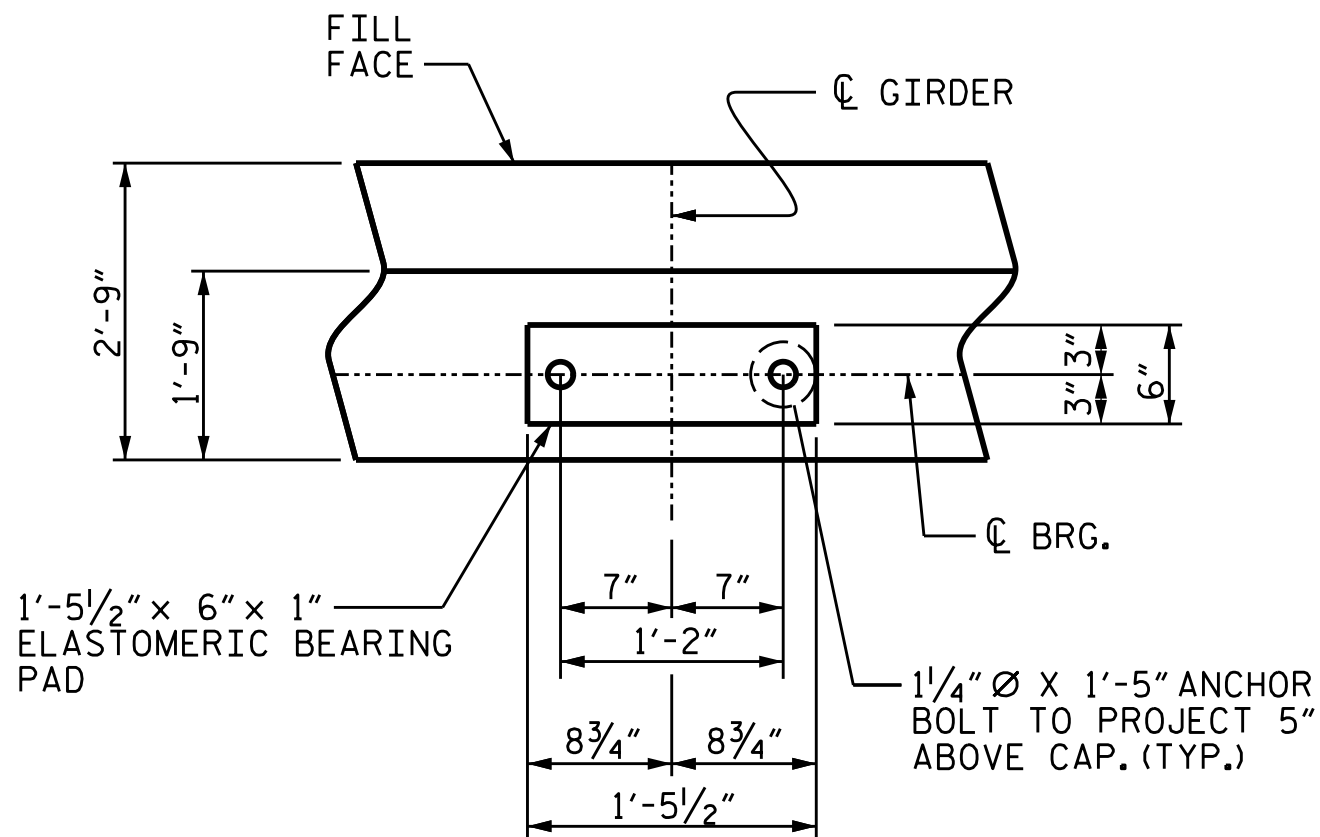
FOR PILE SPLICE DETAILS, SEE SHEET 3 OF 3.

FOR WING DETAILS, SEE SHEET 3 OF 3.

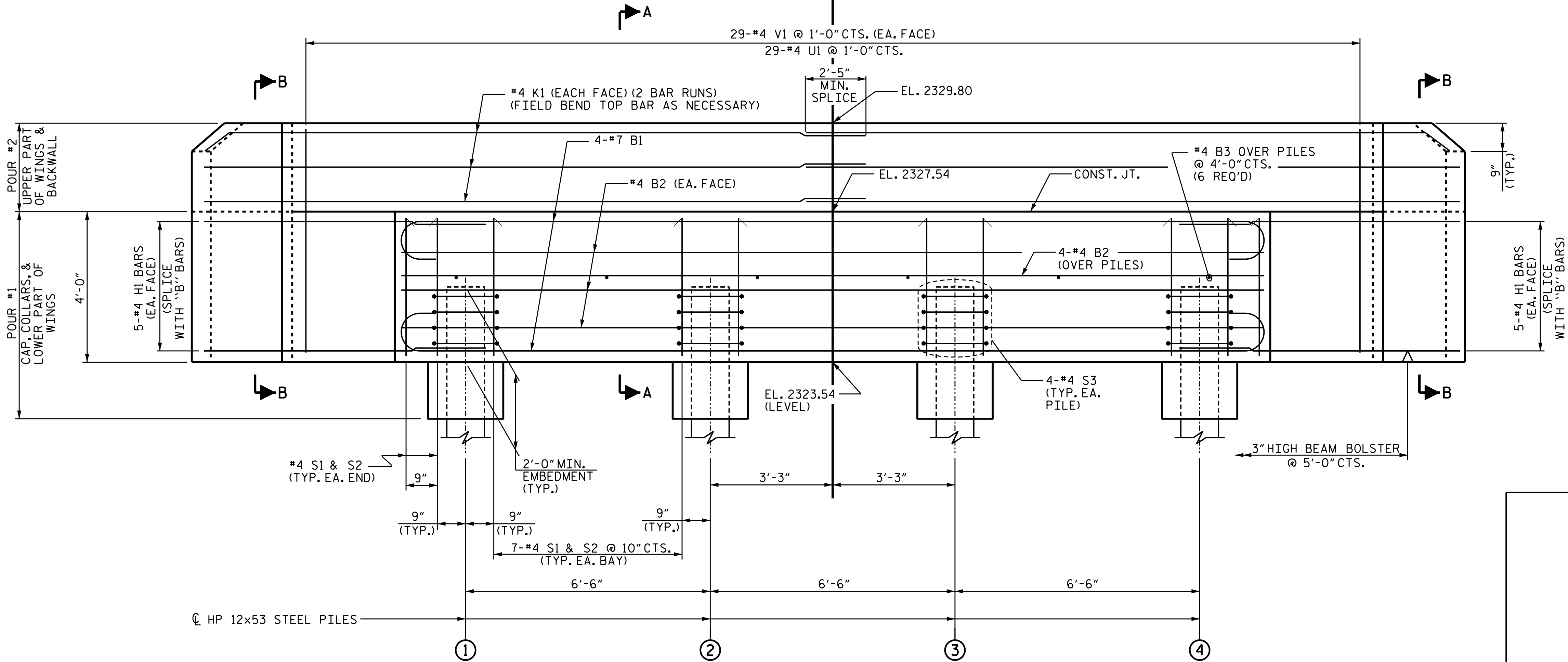
THE TOP SURFACE OF THE END BENT CAP SHALL BE SLOPED TRANSVERSELY FROM THE FILL FACE TO THE FRONT FACE AT THE RATE OF 1%.



PLAN



DETAIL "A"



ELEVATION

FOR SECTION A-A & B-B, SEE SHEET 3 OF 3.

PROJECT NO. DF18314.2045324

HENDERSON COUNTY

STATION: 11+67.50 -L-

SHEET 2 OF 3



STATE OF NORTH CAROLINA
DEPARTMENT OF TRANSPORTATION
RALEIGH

END BENT 2

DRAWN BY : ZCS DATE : 6/25
CHECKED BY : MGC DATE : 8/25
DESIGN ENGINEER OF RECORD : ZCS DATE : 8/25

DOCUMENT NOT CONSIDERED FINAL
UNLESS ALL SIGNATURES COMPLETED

TGS ENGINEERS
201 W. MARION ST. STE 200
SHELBY, NC 28150
PH (704) 476-0003
CORP. LICENSE NO.: C-0275

REVISIONS						SHEET NO.
NO.	BY:	DATE:	NO.	BY:	DATE:	
1			3			S-12
2			4			TOTAL SHEETS 13